



UTILITY WORK OVERVIEW NOTICE

January 2010



UTILITY RELOCATION OVERVIEW

In order to construct the Doyle Drive replacement, the Presidio Parkway, certain existing utilities in the project corridor including potable water, sanitary sewer, telecommunications and electrical, must be relocated.

Utility work is currently underway with multiple crews working along Mason Street.

Utility relocation work includes saw-cutting, trenching, grading and the use of heavy equipment.

Please expect one-lane traffic control and delays.

All businesses will remain open during construction.

This work is expected to continue through March 2010. Thank you for your patience during this activity.

TRAFFIC AND ACCESS INFORMATION

Access for pedestrians, bicyclists and vehicles through the Presidio and to homes and businesses will be maintained during this activity. One-lane traffic control will be required, please follow the instructions of traffic flaggers who will direct vehicles to minimize delays.

Please be cautious when traveling around the construction site and follow the instructions of construction signage and traffic controllers.



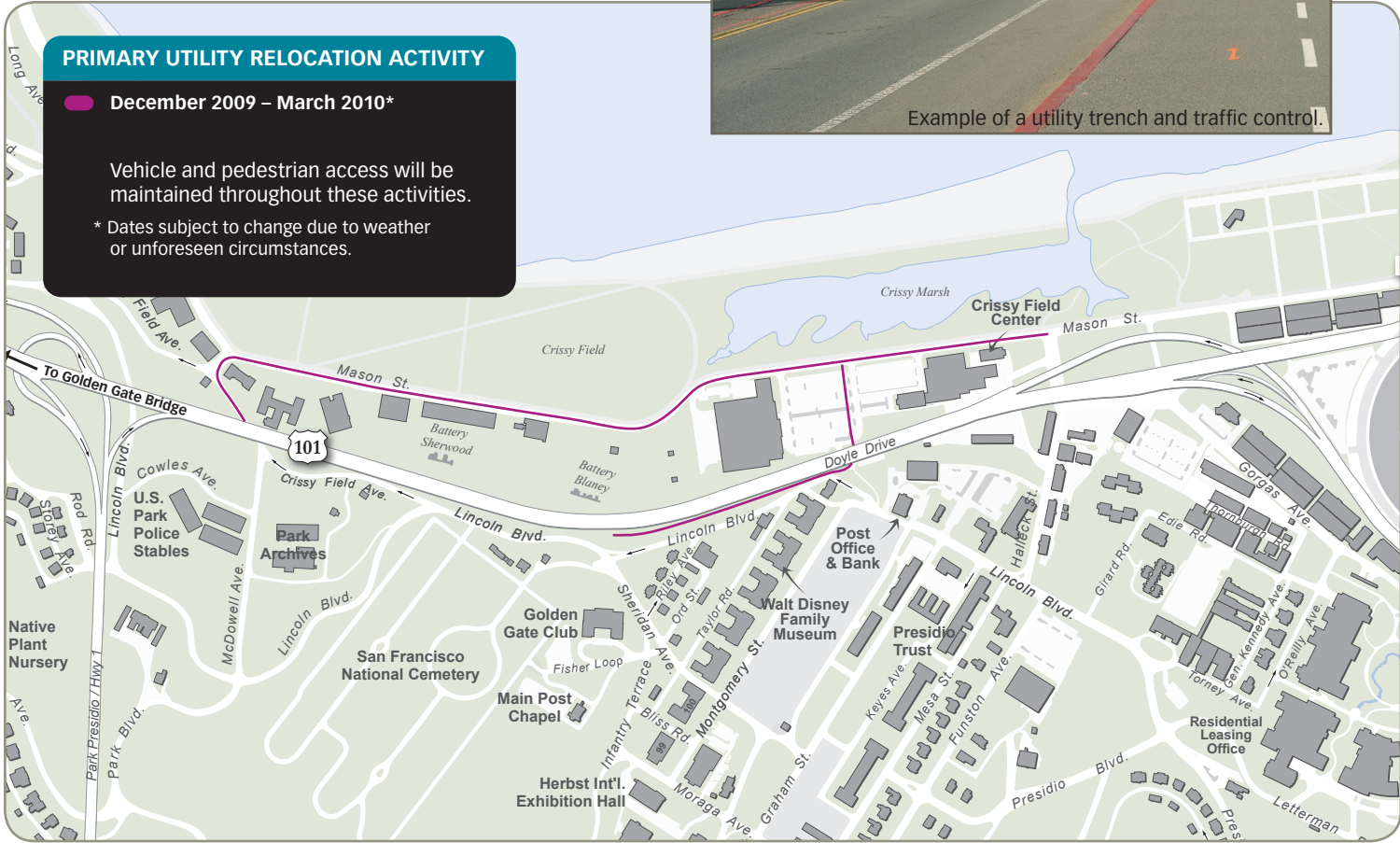
Example of a utility trench and traffic control.

PRIMARY UTILITY RELOCATION ACTIVITY

December 2009 – March 2010*

Vehicle and pedestrian access will be maintained throughout these activities.

* Dates subject to change due to weather or unforeseen circumstances.



ABOUT THE DOYLE DRIVE REPLACEMENT PROJECT

The replacement of Doyle Drive with the Presidio Parkway is a collaborative effort led by the California Department of Transportation, the San Francisco County Transportation Authority, and the Federal Highway Administration.

Doyle Drive is structurally and seismically deficient and must be replaced. The roadway is facing the same problem that threatens other crucial components of the nation's infrastructure – the ravages of time and continual use. Originally built in 1936, Doyle Drive has reached the end of its useful life. The Presidio Parkway is based on a world-class design that will improve the seismic, structural and traffic safety of the roadway. It also will be more sensitive to community needs and to the national park setting, reducing impacts on biological, cultural, historical and natural resources and on the surrounding neighborhoods.

Highlights of the new design include:

- A parkway with two short tunnels, a wide landscaped median, traffic calming transitions to city streets and the inclusion of safety shoulders
- A spectacular regional gateway that respects the natural contours of the surrounding area and complements the unique environment of San Francisco and the Presidio, a national park
- New direct access to the Presidio and enhanced views
- A more centralized location for transit connections
- Enhanced pedestrian connections within the Presidio to the Main Post, Crissy Marsh, the National Cemetery and historic batteries
- Reduced light and noise intrusion at Crissy Field.

CONSTRUCTION OVERVIEW

Construction of the Doyle Drive replacement, the Presidio Parkway, is underway and began more than a year ahead of schedule, due to \$50 million from the American Recovery and Reinvestment Act of 2009.

Construction of the new roadway will take approximately four years to complete. An ongoing series of advisories will update the public about what to expect as work progresses.

CONSTRUCTION MILESTONES

Major Construction Begins-December 2009

- ▶ Traffic remains on existing Doyle Drive until 2011

Seismic Safety Achieved-2011

- ▶ Traffic is transferred onto a portion of the new southbound roadway and a temporary bypass adjacent to the existing Doyle Drive

Substantial Construction Complete-2013

- ▶ Traffic is transferred onto the final Presidio Parkway

Project Complete-2014

- ▶ Landscaping and final design details are complete

RECEIVE THE MOST UP-TO-DATE INFORMATION!



www.PresidioParkway.org



PresidioParkway



info@presidioparkway.org



(415) 263-5953

